

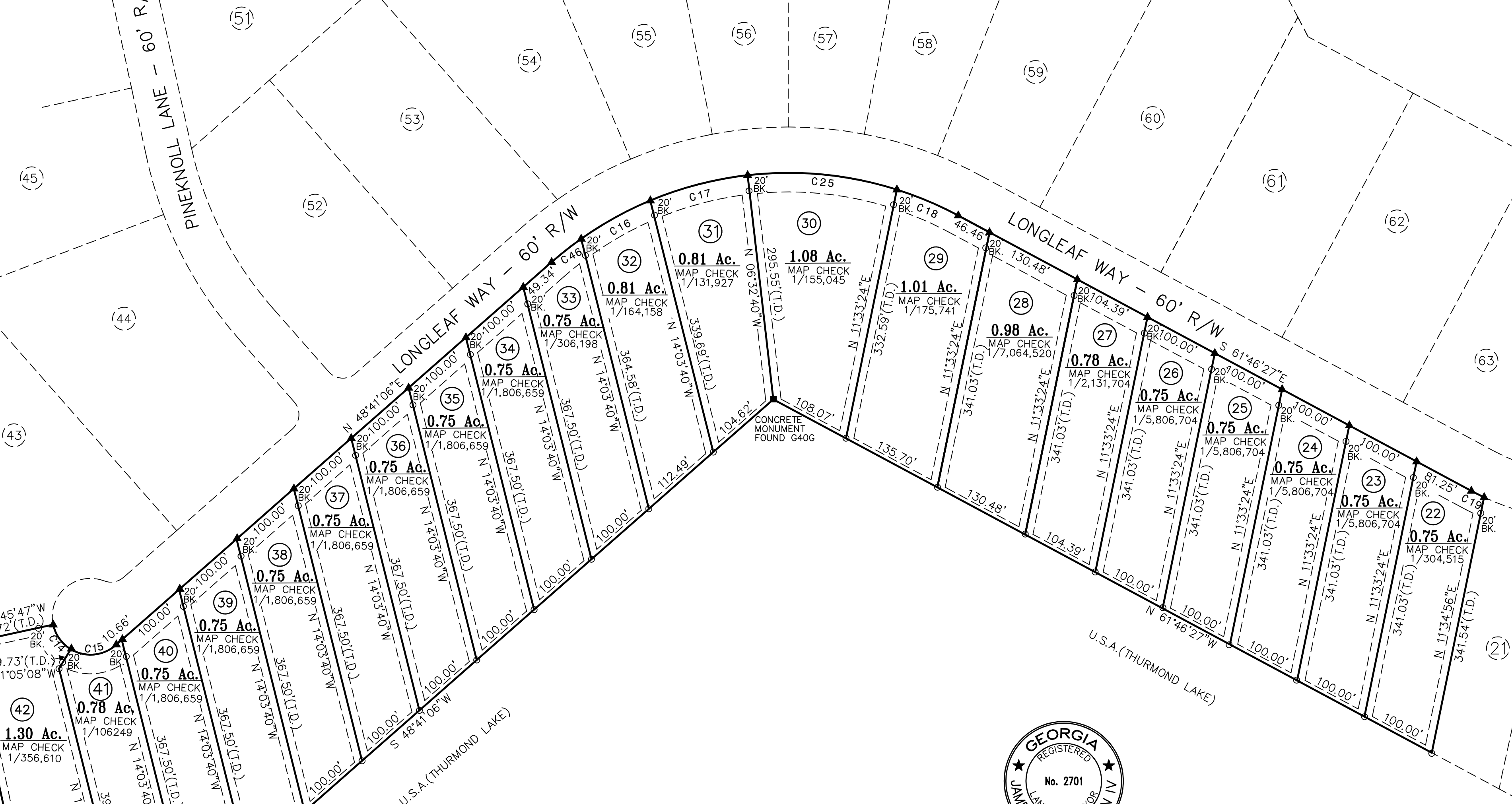
PINEKNOLL LANE - 60' R/W

LONGLEAF WAY - 60' R/W

LONGLEAF WAY - 60' R/W

U.S.A. (THURMOND LAKE)

U.S.A. (THURMOND LAKE)



CONCRETE MONUMENT FOUND G396

CONCRETE MONUMENT FOUND G406



JAMES F. MATTISON, IV, R.L.S. #2701  
 MATTISON & ASSOCIATES, INC.  
 P.O. BOX 714  
 LINCOLN, GEORGIA 30817  
 (706) 359-5853

**TECHNICAL DATA:**  
 INSTRUMENT USED - TOPCON GTS-3  
 TRAVERSE CLOSURE 1/16538  
 ANGLE ERROR 1" PER POINT  
 LEAST SQUARES ADJUSTMENT

THIS PLAT IS SUBJECT TO ALL EASEMENTS, RIGHTS-OF-WAY AND PROTECTIVE COVENANTS OF RECORD.

Curve	Radius	Length	Chord	Chord Bear.
C1	2867.98'	411.95'	411.59'	S 84°48'27" E
C2	780.00'	94.87'	94.81'	S 03°00'21" E
C3	2867.98'	391.57'	391.27'	N 85°58'04" E
C4	720.00'	150.67'	150.40'	N 05°31'00" W
C5	720.00'	9.11'	9.11'	N 11°52'15" W
C6	780.00'	78.23'	78.20'	S 09°21'49" E
C7	530.00'	189.61'	188.60'	S 31°03'57" E
C8	25.00'	39.27'	35.36'	S 03°41'06" W
C9	25.00'	39.27'	35.36'	N 86°18'54" W
C10	470.00'	236.18'	233.70'	N 26°55'09" W
C11	470.00'	2.35'	2.35'	N 12°22'49" W
C12	25.00'	27.13'	25.82'	S 79°46'34" W
C13	50.00'	107.43'	87.92'	S 49°18'54" W
C14	50.00'	40.73'	39.62'	S 35°34'33" E
C15	50.00'	63.18'	59.06'	N 84°53'07" E
C16	470.00'	103.69'	103.48'	N 61°01'48" E
C17	470.00'	132.11'	131.68'	N 75°24'11" E
C18	470.00'	87.32'	87.19'	S 67°05'47" E
C19	330.00'	18.76'	18.76'	S 63°24'09" E
C20	330.00'	100.39'	100.00'	S 73°44'44" E
C21	330.00'	100.39'	100.00'	N 88°49'30" E
C22	330.00'	100.39'	100.00'	N 71°23'43" E
C23	25.00'	29.85'	28.11'	S 85°18'47" E

- LEGEND**
- - 1/2" PIPE SET
  - - 1/2" REBAR FOUND
  - - 5/8" REBAR FOUND
  - - CONCRETE MONUMENT FOUND
  - ▲ - COMPUTED POINT

**FINAL SUBDIVISION PLAT FOR**  
  
**LONGLEAF POINTE**

269th G.M.D.  
 LINCOLN COUNTY, GEORGIA

**MATTISON & ASSOCIATES**  
**LAND SURVEYORS**  
 P.O. BOX 714  
 LINCOLN, GEORGIA 30817  
 PHONE (706) 359-5853  
 FAX (706) 359-5854  
 R.L.S. #2701

DATE: MAY 1, 2006  
 SCALE: 1"=100'  
 DRAWN BY: JFM  
 JOB NO.: 0213  
 FILE NAME: 0213PLAT.DWG  
 SHEET NO.: 3 of 6

