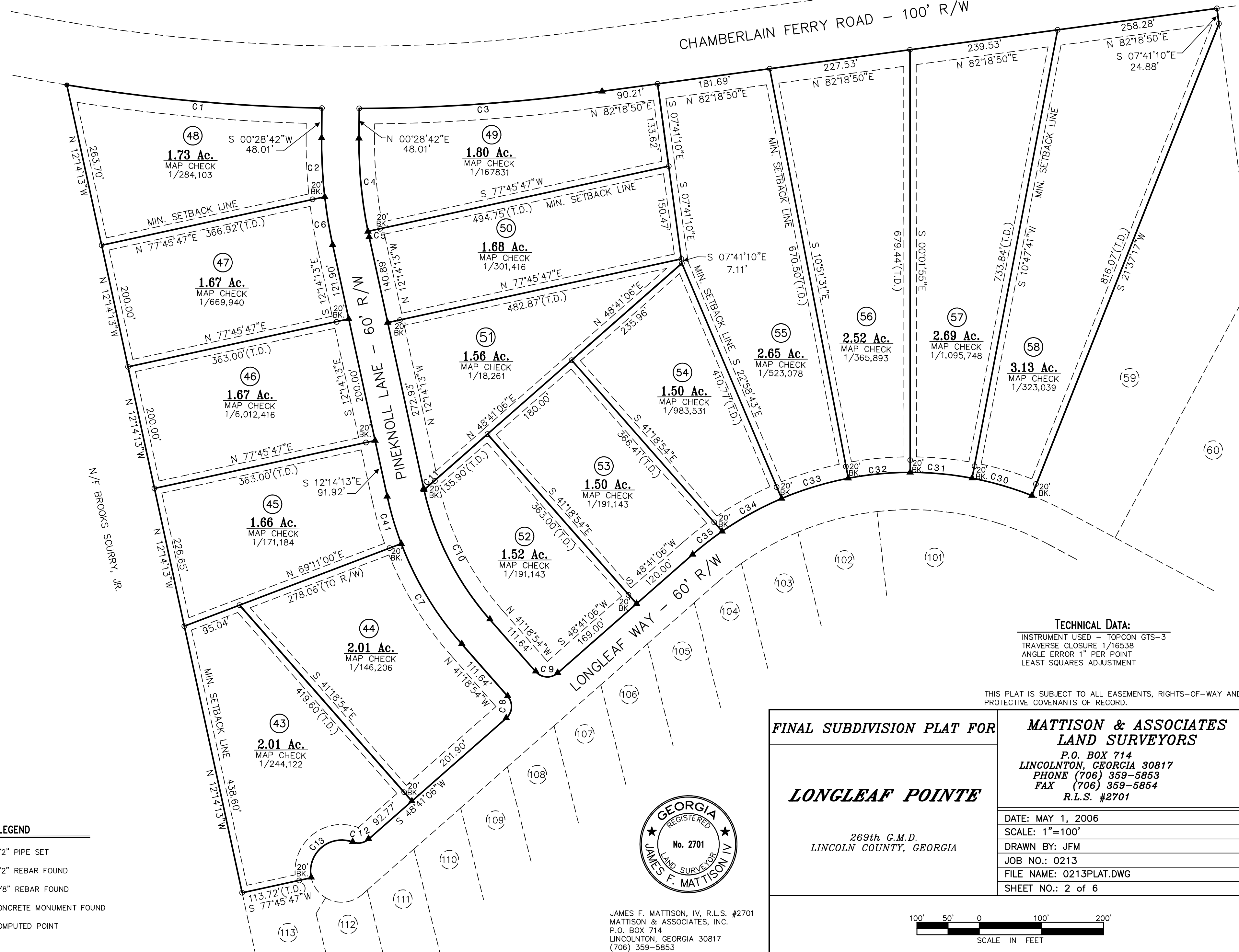


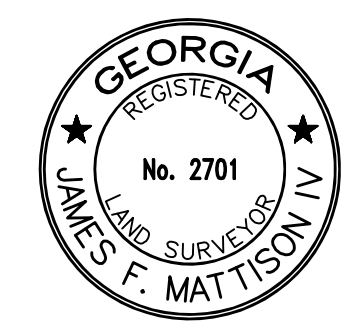
CHAMBERLAIN FERRY ROAD - 100' R/W



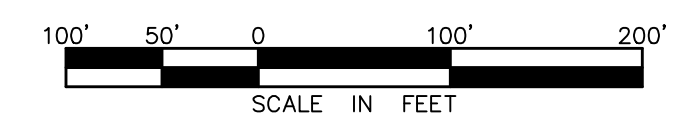
TECHNICAL DATA:
 INSTRUMENT USED - TOPCON GTS-3
 TRAVERSE CLOSURE 1/16538
 ANGLE ERROR 1" PER POINT
 LEAST SQUARES ADJUSTMENT

THIS PLAT IS SUBJECT TO ALL EASEMENTS, RIGHTS-OF-WAY AND PROTECTIVE COVENANTS OF RECORD.

FINAL SUBDIVISION PLAT FOR LONGLEAF POINTE 269th G.M.D. LINCOLN COUNTY, GEORGIA	MATTISON & ASSOCIATES LAND SURVEYORS P.O. BOX 714 LINCOLN, GEORGIA 30817 PHONE (706) 359-5853 FAX (706) 359-5854 R.L.S. #2701
	DATE: MAY 1, 2006 SCALE: 1"=100' DRAWN BY: JFM JOB NO.: 0213 FILE NAME: 0213PLAT.DWG SHEET NO.: 2 of 6



JAMES F. MATTISON, IV, R.L.S. #2701
 MATTISON & ASSOCIATES, INC.
 P.O. BOX 714
 LINCOLN, GEORGIA 30817
 (706) 359-5853



- LEGEND**
- - 1/2" PIPE SET
 - - 1/2" REBAR FOUND
 - ◐ - 5/8" REBAR FOUND
 - - CONCRETE MONUMENT FOUND
 - ▲ - COMPUTED POINT