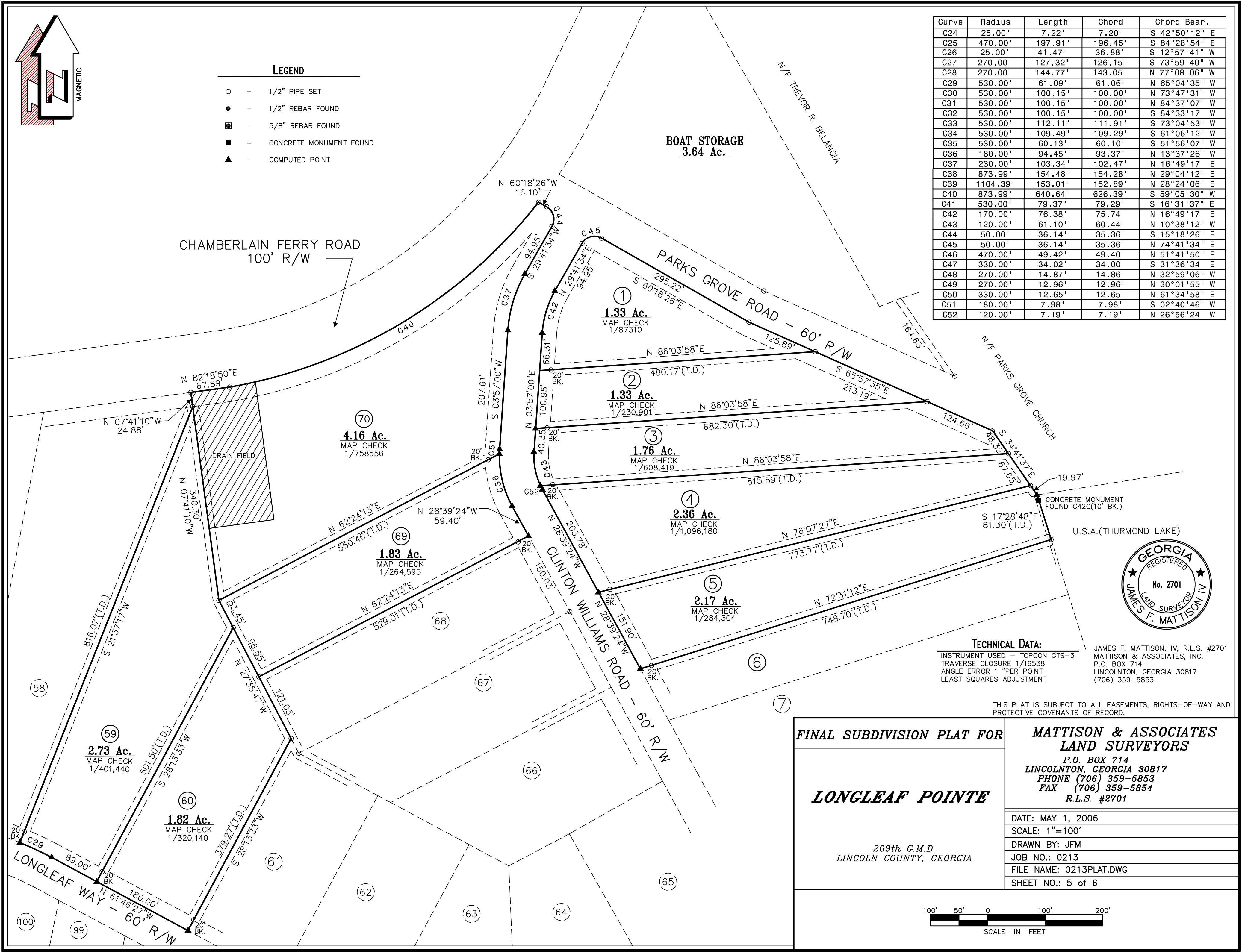


LEGEND

- - 1/2" PIPE SET
- - 1/2" REBAR FOUND
- ◻ - 5/8" REBAR FOUND
- - CONCRETE MONUMENT FOUND
- ▲ - COMPUTED POINT

Curve	Radius	Length	Chord	Chord Bear.
C24	25.00'	7.22'	7.20'	S 42°50'12" E
C25	470.00'	197.91'	196.45'	S 84°28'54" E
C26	25.00'	41.47'	36.88'	S 12°57'41" W
C27	270.00'	127.32'	126.15'	S 73°59'40" W
C28	270.00'	144.77'	143.05'	N 77°08'06" W
C29	530.00'	61.09'	61.06'	N 65°04'35" W
C30	530.00'	100.15'	100.00'	N 73°47'31" W
C31	530.00'	100.15'	100.00'	N 84°37'07" W
C32	530.00'	100.15'	100.00'	S 84°33'17" W
C33	530.00'	112.11'	111.91'	S 73°04'53" W
C34	530.00'	109.49'	109.29'	S 61°06'12" W
C35	530.00'	60.13'	60.10'	S 51°56'07" W
C36	180.00'	94.45'	93.37'	N 13°37'26" W
C37	230.00'	103.34'	102.47'	N 16°49'17" E
C38	873.99'	154.48'	154.28'	N 29°04'12" E
C39	1104.39'	153.01'	152.89'	N 28°24'06" E
C40	873.99'	640.64'	626.39'	S 59°05'30" W
C41	530.00'	79.37'	79.29'	S 16°31'37" E
C42	170.00'	76.38'	75.74'	N 16°49'17" E
C43	120.00'	61.10'	60.44'	N 10°38'12" W
C44	50.00'	36.14'	35.36'	S 15°18'26" E
C45	50.00'	36.14'	35.36'	N 74°41'34" E
C46	470.00'	49.42'	49.40'	N 51°41'50" E
C47	330.00'	34.02'	34.00'	S 31°36'34" E
C48	270.00'	14.87'	14.86'	N 32°59'06" W
C49	270.00'	12.96'	12.96'	N 30°01'55" W
C50	330.00'	12.65'	12.65'	N 61°34'58" E
C51	180.00'	7.98'	7.98'	S 02°40'46" W
C52	120.00'	7.19'	7.19'	N 26°56'24" W



TECHNICAL DATA:
 INSTRUMENT USED - TOPCON GTS-3
 TRAVERSE CLOSURE 1/16538
 ANGLE ERROR 1" PER POINT
 LEAST SQUARES ADJUSTMENT

JAMES F. MATTISON, IV, R.L.S. #2701
 MATTISON & ASSOCIATES, INC.
 P.O. BOX 714
 LINCOLNTON, GEORGIA 30817
 (706) 359-5853

THIS PLAT IS SUBJECT TO ALL EASEMENTS, RIGHTS-OF-WAY AND PROTECTIVE COVENANTS OF RECORD.

FINAL SUBDIVISION PLAT FOR LONGLEAF POINTE 269th G.M.D. LINCOLN COUNTY, GEORGIA	MATTISON & ASSOCIATES LAND SURVEYORS P.O. BOX 714 LINCOLNTON, GEORGIA 30817 PHONE (706) 359-5853 FAX (706) 359-5854 R.L.S. #2701
	DATE: MAY 1, 2006 SCALE: 1"=100' DRAWN BY: JFM JOB NO.: 0213 FILE NAME: 0213PLAT.DWG SHEET NO.: 5 of 6

